

REGISTRATION / PAYMENT FORM

“An Inclusive Life: Focus on Education and Life after School”

An Inclusive Life
April 4th and 5th, 2011

Complete this form and mail it with check payable to:

Inclusion Institute

411 N. Central Ave. Suite 620, Glendale CA 91203
(818) 543-4631

*Please copy and submit a **separate** registration form for **each** applicant*

REGISTRATION DEADLINE: FRIDAY, MARCH 25, 2011

REGISTRATION FEE FOR BOTH DAYS:

\$50 for People with Disabilities and Family Members
\$100 for Professionals and Others

[PLEASE TYPE OR PRINT CLEARLY]

Name: _____

Affiliation/Agency: _____

Address: _____

City: _____

State: _____ Zip Code: _____

Daytime Telephone: _____

Email: _____

I am a (please check one):

Professional Consumer Family Member Other

I need translation (indicate language):

If you are served by a regional center, indicate which one here:

If you cannot afford to pay, first call your regional center service coordinator to request that they fund your attendance. (Vendor number PD 2413, Service Code 102: Individual and Family Training). If that is not an option, please call the Area Board 10 office to request a fee waiver.

Area Board 10/Inclusion Institute Inc.
411 North Central Avenue, Suite #620
Glendale, CA 91203

The Inclusion Institute, Area Board 10,
and the Westside Family Resource and
Empowerment Center Present:

“An Inclusive Life: Focus on Education and Life after School”

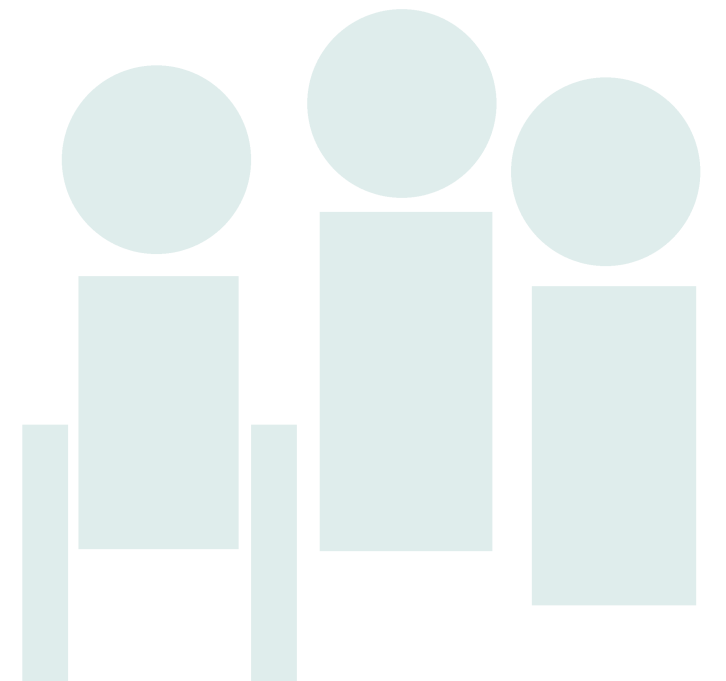
*A Two-Day Event for People with
Developmental Disabilities, their Family
and Friends, and the Professionals who
Support them in the Community*

**MONDAY AND TUESDAY,
APRIL 4TH AND 5TH 2011**
California Endowment Center
for Healthy Communities

1000 North Alameda Street
Los Angeles, CA 90012
8:00 am to 3:00 pm

*Including a Live Musical Performance by
“Anomaly” from the Performing Arts Studio –
West during lunch on Tuesday, April 5th.*

Area Board 10
411 North Central Avenue, Suite #620
Glendale, CA 91203
818-543-4631
www.areaboard10.org



CONFERENCE SCHEDULE APRIL 4TH AND 5TH, 2011

MONDAY, APRIL 4th

8:00 – 9:00

Registration, Continental Breakfast

9:00 – 10:00

Keynote Address: “The Journey of Advocacy – Working With Families” Janeen Steel, Learning Rights Law Center

Janeen Steel is the Executive Director of Learning Rights Law Center. The mission of Learning Rights Law Center is to ensure students with disabilities have equitable access to the public education system.

AM BREAKOUT SESSIONS

10:30 – 12:00

Concurrent Sessions

1. “Recent Changes to California’s Early Start Program” Brigitte Ammons, Disability Rights California

Brigitte Ammons is the Senior Advocate for the Los Angeles office of Disability Rights California (formerly Protection & Advocacy, Inc.). Ms. Ammons will provide an overview of new laws that impact parents with young children. She will also provide an update on the State Budget.

2. “Making Sense of Psycho-Educational Assessments” Ann Simun, PsyD, Neuropsychology Partners

Ann Simun has been working with children with learning and behavioral challenges since 1989. She is a licensed psychologist specializing in neuropsychology. She is also a credentialed School Psychologist and Educational Psychologist.

3. “Transition Starts at Birth...What Really Happens During Transition to the Adult World?” Richard Rosenberg, Whittier Union High School District Career Connections.

Richard Rosenberg is Lead Vocational Coordinator for the Whittier Union High School District Career Connection program. Richard and a program participant will share their experiences transitioning from school to adult life.

LUNCH 12:00 – 1:00

PM BREAKOUT SESSIONS

1:30 – 3:00

Concurrent Sessions

1. “Movin On: Transition From Early Start

Brigitte Ammons is the Senior Advocate for the Los Angeles office of Disability Rights California (formerly Protection & Advocacy, Inc.). In this session Ms. Ammons will provide an overview of proven strategies that can help parents implement a successful transition plan for their child.

2. “Navigating Your Legal Options” Janeen Steel, Learning Rights Law Center

Janeen Steel is the Executive Director of Learning Rights Law Center. In this session Ms. Steel will provide an in depth overview of legal strategies for success in due process hearings.

3. “How Best to Prepare Your Child to Pursue Post-Secondary Education” Eric Latham, Pathway at UCLA Extension, Sydney Quon and Christine Suh, Southwest SELPA

Eric Latham, Sidney Quon and Christine Suh will discuss an exciting new initiative that will give young adults access to post-secondary education.

TUESDAY, APRIL 5th

8:00 – 9:00

Registration, Continental Breakfast

9:00 – 10:00

Keynote Address: “Inclusion for All” Jan Weiner, PhD, California State University Fullerton

Jan Weiner is an associate professor of special education at CSU Fullerton. Professor Weiner is committed to the belief that all individuals, regardless of ability or disability, can and should learn together.

AM BREAKOUT SESSIONS

10:30 – 12:00

Concurrent Sessions

1. “Inclusive Preschools” Jan Weiner, PhD, California State University, Fullerton

Jan Weiner will present on trends in inclusive preschools and strategies for accessing fully included preschools.

2. “IEP Meetings: Strategies to Get What You Need - Part 1” Chris Arroyo and Marilyn Barraza, Area Board 10

Going beyond a simple review of the law, this two-part presentation will focus on the IEP process and how to develop appropriate strategies to get what you need. Those new to special education and those very familiar with it alike are certain to expand their toolbox in these sessions.

3. “Pioneers to Progress – Parents As the Ultimate Advocates” Michelle Smith, PT and Carolyn Tellalian, LCSW, Parent Advocates and Founders of the Wayfinders Program at California State University, Fresno

Ms. Smith and Ms. Tellalian will present on their experiences getting a postsecondary education program for students with developmental disabilities established at a major California university.

LUNCH 12:00 – 1:00

Musical Performance by “Anomaly” from the Performing Arts Studio – West.

PM BREAKOUT SESSIONS

1:30 – 3:00

Concurrent Sessions

1. “Assistive Technology for Preschoolers” Rosemarie Punzalan, Empowertech, Inc.

Ms. Punzalan will provide an overview of AT resources available to young children and their parents.

2. “IEP Meetings: Strategies to Get What You Need - Part 2” Chris Arroyo and Marilyn Barraza, Area Board 10

(Part 2 of AM Session #2, See Above)

3. “Thinking Outside the Big Box Store: Creative Options for Employment” Vickie Vining, Vickie Vining Consulting

Vickie Vining has many years of experience working in the field of developmental disabilities. This session will provide information on customized employment – both for self-employment and regular wage jobs. There will be interactive activities to help participants develop creative ideas for employment based on skills and interests. There will also be handouts and additional resources to use to pursue customized employment options.



The Inclusion Institute, Area Board 10, and the Westside Family Resource and Empowerment Center Present:

“An Inclusive Life: Focus on Education and Life after School”

